

Capabilities Statement

Prolific-Technology Consulting Group, LLC (PTCGL)

"Solutions and Productivity for Today's Technology Projects"



Consulting



Schedule Management



Earned Value Management



Project Controls



Cost Control & Estimating

Prolific-Technology Consulting Group, LLC (PTCGL)
14011 Rockbasket Terrace
Chester, VA 23836
Phone: 804.530.7400
Fax: 804.530.0859
Website: www.ptcgl.com
Contact email: service@ptcgl.com



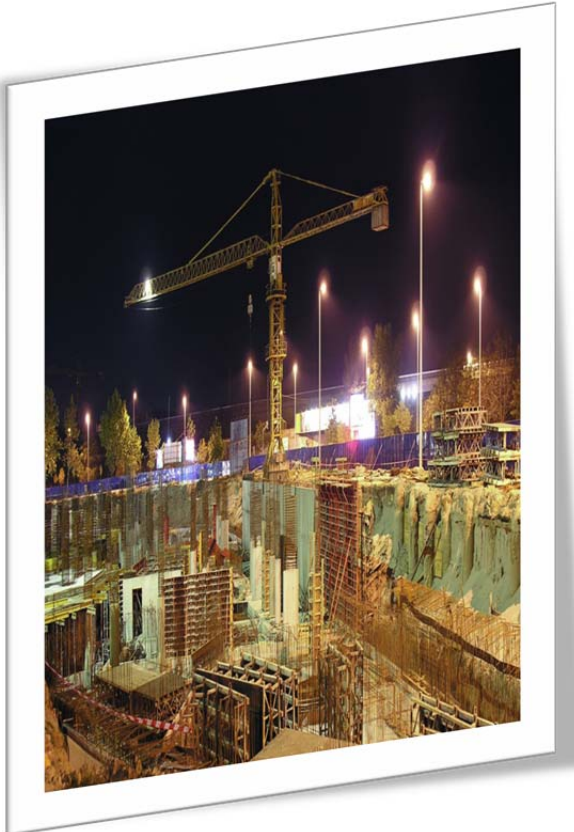
Prolific-Technology Consulting Group, LLC (PTCGL) develops roadmaps and solutions for today's technology projects.

In planning for a successful project, PTCGL provides the **vision for change**.

We begin with the **end in mind** to gear change toward accomplishing our clients' **objectives** and **expected outcomes**.

We build a **commitment plan** for implementing change, using our **project management systems** and **methodologies** to detail and track actions to completion.

This results in a **disciplined**, pace change process that forms the basis for a **successful project approach**.



Construction Management

Corporate Overview

PTCGL established in March 2004, and is a Veteran-Owned Small Business (VOSB), certified Minority Business Enterprise (MBE) with current SBA 8(a) status pending. Prolific-Technology has gained the majority of our success through consulting on Department of Energy (DOE) and Microelectronics, Automotive, Mining and Scientific projects. Our company specializes in Project Controls such as Engineering, Procurement and Constructability (EPC), by providing "best practices" in the area of **planning, scheduling** and **estimating** such as project controls, enterprise applications and monitoring tools necessary for decision-making and establishing objectives.

Our service includes:

- ✓ Project Management
- ✓ Critical Path Analysis
- ✓ Earned Value Management
- ✓ Scheduling
- ✓ Estimating
- ✓ Risk Management
- ✓ Change Control
- ✓ Time Impact Analysis
- ✓ Continuous Optimization
- ✓ Claim Analysis

"At the core of our management approach is the belief that those most familiar with the work to be accomplished and the inherent risks associated with that effort should play a pivotal role in decision-making. Our teams are organized to best capitalize on each teammate's strengths; furthermore, we have first-hand success in leading and managing projects." - **President, PTCGL**

Our achievements consist of:

- ✓ Over 35 major government & commercialized projects successfully completed
- ✓ Managed over \$250 billion in project life cycle cost
- ✓ Established leader in DOE complex as project controls company
- ✓ Over 20 years utilizing Primavera applications
- ✓ Over 10 years Estimating experience
- ✓ Primavera leading edge data migrating specialists
- ✓ Reliable, consistent and highly confident resource loading capability
- ✓ Proven scheduling techniques and methodologies

Prolific-Technology Consulting Group, LLC (PTCGL)
14011 Rockbasket Terrace
Chester, VA 23836
P|804.530.7400 F|804.530.0859
[E|service@ptcgl.com](mailto:service@ptcgl.com)
W|www.ptcgl.com
2 | Page



Company Designations

DUNS: 149284742
 NAICS: 541511 541512
 541513 541519
 541611 541614
 541618 541620
 541690 541990
 561110 561210
 561320 562998

Office Locations

USA Office: Corporate

Prolific-Technology Consulting Group, LLC (PTCGL)

14011 Rockbasket Terrace

Chester, Virginia 23836

O| 804.530.7400

F| 804.530.0859

UK Office:

Prolific-Technology Consulting Group U.K. Limited
(PTCGUKL)

Century House 4th Floor

11th Street St Peters Square

Manchester

Great Manchester M2 3DN

Since 2004, our team has demonstrated a unique ability to devise our service approach to respond to customers' needs, thereby minimizing arising risks. The expertise of our consultants lies in their ability to address all challenges and concerns of our commercial and government related clients in a timely manner. Our effectiveness is based on the key elements of managing scope, cost, quality, personnel, and risk in any initiative.

The Prolific model is built upon the use of experienced teams assigned to projects, and we place a high priority on organizing project teams to profit from each teammate's attributes. Our approach is carefully designed to achieve optimum and on-schedule results, with the most affordable rate for our client. We integrate your various in-house software applications with off-the-shelf project management software or in developing specialized software that meets your project, program, or corporate needs.

Prolific's Project Controls methodology offers dramatic benefits to our customer through direct hires or staff augmentation. This proactive process allows us to identify problems, obstacles, and opportunities that arise during the course of a program and respond to them in a timely and effective manner; furthermore, allows us to extend the following functions.

- Budget Analysis
- Resource Planning
- Guidelines & Criteria for General Contractor
- Schedule & Estimate Management
- Performance & Variances Reporting
- Change Control
- Streamlined Processes

"We had Prolific work with us to develop a plan for moving an entire building full of huge particle accelerators and related components. This task will be daunting, and all of us were dreading even the activity of planning this. Prolific took on this assignment with gusto, organized me and my staff to attack this problem, and succeeded with the creation of a wonderful plan and loaded schedule. Because of Prolific's involvement, I am comfortable that when the time comes that our move will proceed with minimum problems and on time."

Senior Scientist -Sandia National Labs



Prolific-Technology Consulting Group, LLC (PTCGL)

14011 Rockbasket Terrace

Chester, VA 23836

P|804.530.7400 F|804.530.0859


[E|service@ptcgl.com](mailto:service@ptcgl.com)

W|www.ptcgl.com




Some of Our Clients

“Prolific-Technology has become a go-to company and has established a reputation within the DOE complex as well as other industrial environments as a “fire fighter” – not only able to resolve complex problems but to also provide staff augmentation of candidates who have been mentored and trained to perform to PTCGL’s high standards. I have subsequently worked with PTCGL on a number of projects and have observed them to assist entire project teams in orienting their efforts toward quality and timely deliverables. Their performance on many occasions resulted in successful projects when the outcome prior to their involvement was most certainly in doubt.” **President –Beacon Rock Consulting**



Government

- Department of Energy (DOE)
- USACE



Scientific

- Sandia National Laboratory
- National Science Foundation (NSF)

Microelectronics

- IBM
- Micron
- NEC Electronic North America
- Qimonda
- Infineon AG
- Zilog
- Axcelis



Nuclear

- URS
- Babcock & Wilcox (B&W)
- CHM2 Hill
- Tetra Tech
- Areva NP
- NorthWind
- Shaw
- Energy Solutions
- Washington Group Inc (WSMS)
- E2
- Worley Parsons - Polestar




International

- Areva (EURODIF)
- Nuclear Management Partners (NMP)
- UK LLWR
- Nuclear Decommissioning Agency
- Washington Group EC



Commercialized

- Iluka
- Toyota
- Worley Parsons
- Weeks Marine

“Prolific-Technology, LLC has supported URS Corporation in growing our market share and been a key consulting firm providing project management and scheduling capabilities.” **Sr. Vice President, URS Corporation**